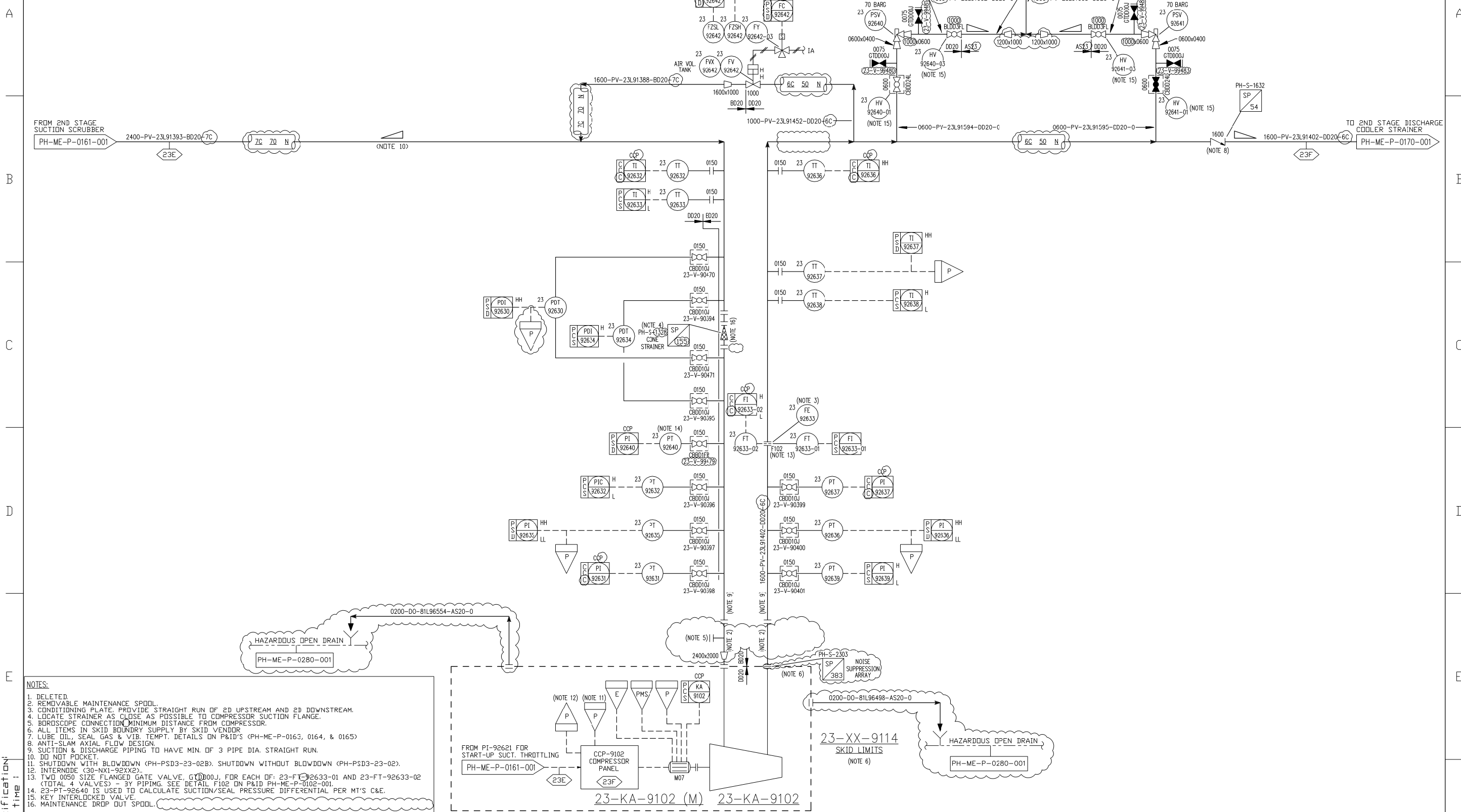
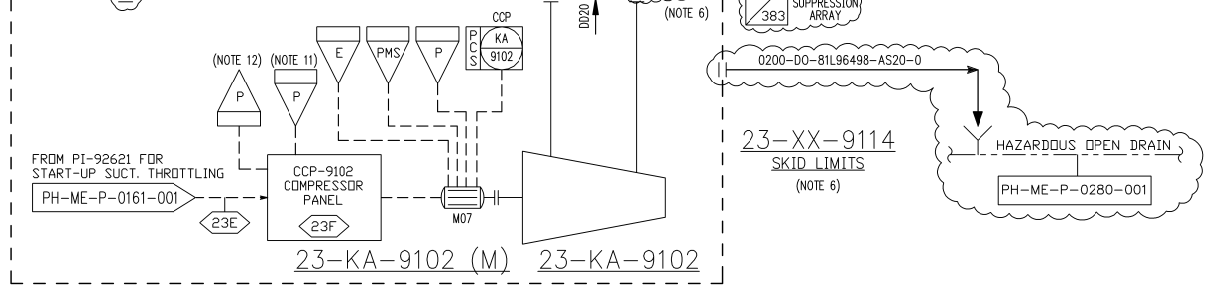


23-XX-9114
2ND STAGE COMPRESSOR SKID

23-KA-9102
2ND STAGE COMPRESSOR
CAPACITY: 4.9MM SM³/D AT 25.1 DELTA BAR
DRIVER: 11,000 KW AT 9600 RPM



- NOTES:**
1. DELETED.
 2. REMOVABLE MAINTENANCE SPOOL.
 3. CONDITIONING PLATE. PROVIDE STRAIGHT RUN OF 2D UPSTREAM AND 2D DOWNSTREAM.
 4. LOCATE STRAINER AS CLOSE AS POSSIBLE TO COMPRESSOR SUCTION FLANGE.
 5. BORDSCOPE CONNECTION MINIMUM DISTANCE FROM COMPRESSOR.
 6. ALL ITEMS IN SKID BOUNDARY SUPPLY BY SKID VENDOR.
 7. LUBE OIL, SEAL GAS & VIB. TEMPT. DETAILS ON P&ID'S (PH-ME-P-0163, 0164, & 0165).
 8. ANTI-SLAM AXIAL FLOW DESIGN.
 9. SUCTION & DISCHARGE PIPING TO HAVE MIN. OF 3 PIPE DIA. STRAIGHT RUN.
 10. DO NOT POCKET.
 11. SHUTDOWN WITH BLOWDOWN (PH-PSD3-23-02B). SHUTDOWN WITHOUT BLOWDOWN (PH-PSD3-23-02).
 12. INTERNODE (30-NX1-92XX2).
 13. TWO 0050 SIZE FLANGED GATE VALVE, G0000J, FOR EACH OF: 23-FI-92633-01 AND 23-FI-92633-02 (TOTAL 4 VALVES) - BY PIPING. SEE DETAIL F102 ON P&ID PH-ME-P-0162-001.
 14. 23-PT-92640 IS USED TO CALCULATE SUCTION/SEAL PRESSURE DIFFERENTIAL PER MT'S C&E.
 15. KEY INTERLOCKED VALVE.
 16. MAINTENANCE DROP OUT SPOOL.



Field for file specification
Field for date and time

NOTES:

REV	DATE	BY	DESCRIPTION	CHK	ENGR	APPR	CLIENT
2	15OCT08	JDK	RE-ISSUED FOR CONSTRUCTION	RAK	RK/PS/A	RAB	
1	16MAY08	JDK	RE-ISSUED FOR CONSTRUCTION	RAK	JC/PS/A	SVS	
0	01OCT07	JDK	ISSUED FOR CONSTRUCTION	JTG	JC/ES/AB	SVS	

REV	DATE	BY	DESCRIPTION	CHK	ENGR	APPR	CLIENT
2	15OCT08	JDK	RE-ISSUED FOR CONSTRUCTION	RAK	RK/PS/A	RAB	
1	16MAY08	JDK	RE-ISSUED FOR CONSTRUCTION	RAK	JC/PS/A	SVS	
0	01OCT07	JDK	ISSUED FOR CONSTRUCTION	JTG	JC/ES/AB	SVS	

Wood Group Engineering (North Sea) Ltd.

MUSTANG INTERNATIONAL, LP
HOUSTON, TEXAS

PROJECT NO. 10910

bp

REGISTRATION CODE 5

AREA 143-02 SYSTEM 23 TYPE XB

VALHALL
RE-DEVELOPMENT PROJECT
PIPING & INSTRUMENT DIAGRAM
2ND STAGE COMPRESSOR

DRAWING NO. 0162 001

SCALE NONE

REV. 2