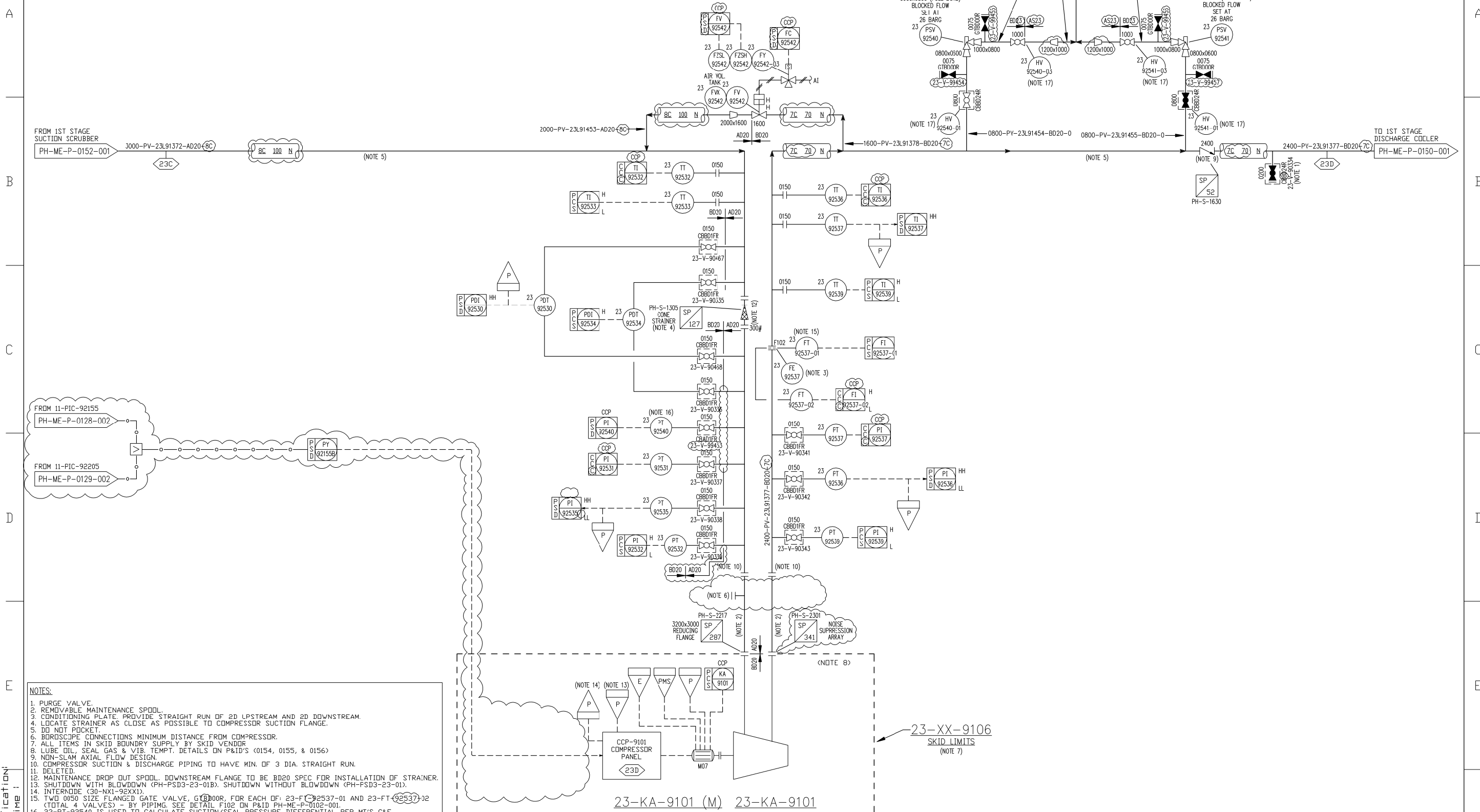


23-XX-9106
1ST STAGE COMPRESSOR SKID

23-KA-9101
1ST STAGE COMPRESSOR
CAPACITY: 4.8MM SM3/D AT 8.9 DELTA BAR
DRIVER: 11000 KW AT 6300 RPM



- NOTES:
1. PURGE VALVE.
 2. REMOVABLE MAINTENANCE SPOOL.
 3. CONDITIONING PLATE: PROVIDE STRAIGHT RUN OF 2D UPSTREAM AND 2D DOWNSTREAM.
 4. LOCATE STRAINER AS CLOSE AS POSSIBLE TO COMPRESSOR SUCTION FLANGE.
 5. DO NOT POCKET.
 6. BORDSCOPE CONNECTIONS MINIMUM DISTANCE FROM COMPRESSOR.
 7. ALL ITEMS IN SKID BOUNDARY SUPPLY BY SKID VENDOR
 8. LUBE OIL, SEAL GAS & VIB. TEMPT. DETAILS ON P&ID'S (0154, 0155, & 0156)
 9. NON-SLAM AXIAL FLOW DESIGN.
 10. COMPRESSOR SUCTION & DISCHARGE PIPING TO HAVE MIN. OF 3 DIA. STRAIGHT RUN.
 11. DELETED.
 12. MAINTENANCE DROP OUT SPOOL, DOWNSTREAM FLANGE TO BE BD20 SPEC FOR INSTALLATION OF STRAINER.
 13. SHUTDOWN WITH BLOWDOWN (PH-PSD3-23-01B). SHUTDOWN WITHOUT BLOWDOWN (PH-FSD3-23-01).
 14. INTERNDE (30-NX1-92XX1).
 15. TWO 0050 SIZE FLANGED GATE VALVE, GATE DOOR, FOR EACH OF: 23-FV-92537-01 AND 23-FV-92537-02 (TOTAL 4 VALVES) - BY PIPING. SEE DETAIL F102 ON P&ID PH-ME-P-0102-001.
 16. 23-PT-92540 IS USED TO CALCULATE SUCTION/SEAL PRESSURE DIFFERENTIAL PER MT'S C&E.
 17. KEY INTERLOCKED VALVE.

NOTES:

REV	DATE	BY	DESCRIPTION	CHK	ENGR	APPR	CLIENT
2	15OCT08	JDK	RE-ISSUED FOR CONSTRUCTION	RAK	RK/PS/A	RAB	
1	09MAY08	JDK	RE-ISSUED FOR CONSTRUCTION	RAK	JC/PS/A	SVS	
0	01OCT07	JDK	ISSUED FOR CONSTRUCTION	JTG	JC/ES/AE	SVS	

				VALHALL RE-DEVELOPMENT PROJECT PIPING & INSTRUMENT DIAGRAM 1ST STAGE COMPRESSOR	
		REGISTRATION CODE: 143-02		DRAWING NO. PH ME P 0153 001	
PROJECT NO. 10910		AREA: 23 SYSTEM: XB		SCALE: NONE REV: 2	

Field for file specification
Field for date and time