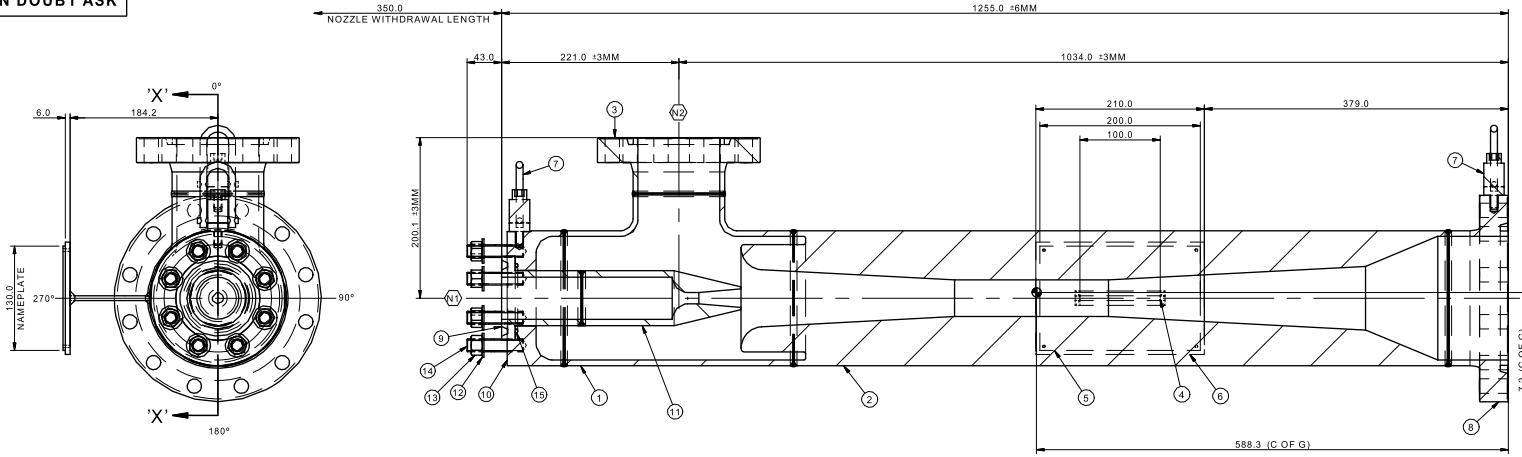
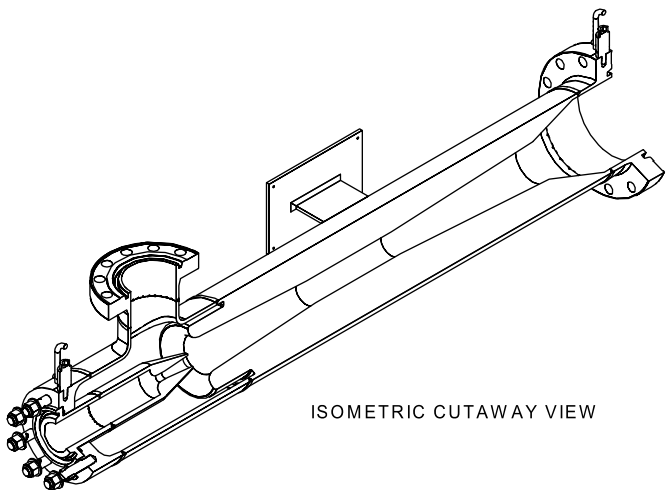


IF IN DOUBT ASK

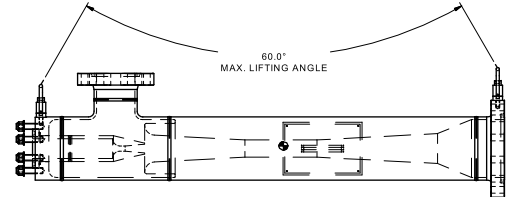


SECTION 'X-X'

Item Number	Description	Material	Qty	Notes
1	TEE	DS: ASTM A790 (S31803)	1	6" X 4" SCH 40 ASME B16.9 RED. TEE
2	BAR	DS: ASTM A162 F51 (S31803)	1	
3	Flange	DS: ASTM A162 F51 (S31803)	1	NORSOK L-005 REV.2 CL600 COMPACT SPD
4	PLATE	DS: ASTM A249 (S31803)	1	100.0 X 100.0 X 6.0 THK
5	Nameplate	Stainless steel	1	Large CE Type
6	PLATE	DS: ASTM A162 UNS S31803	1	210.0 X 140.0 X 3.0 THK
7	SWIVEL HOIST RING	Carbon Steel	2	CROSSBY SWIVEL HOIST RING TYPE 1015613 W. LL = 55kg
8	BAR	DS: ASTM A162 F51 (S31803)	1	NORSOK L-005 REV.2 CL600 COMPACT SPD
9	BAR	DS: ASTM A162 F51 (S31803)	1	
10	FORGED BAR	DS: ASTM A162 F51 (S31803)	1	SPECIAL FLANGE
11	BAR	DS: ASTM A162 F51 (S32205)	1	
12	FLAT WASHER	SS: BS 3892 Gr.A2	8	TO SUIT 5/8"-11UNC STUDBOLT
13	NUT	CS: ASTM A194 Gr.4H3	8	5/8"-11UNC FULL NUT
14	STUDBOLT	CS: ASTM A320 L7	8	5/8"-11UNC X 70.0 LONG
15	O' RING GASKET	ALLOY 718 - SILVER COATED	1	



ISOMETRIC CUTAWAY VIEW



LIFTING DIAGRAM

PACKAGE NO. 10910 - 001	CONTRACTOR TRANSVAC SYSTEMS LTD.
PACKAGE TITLE SECOND STAGE SEPARATOR GAS EJECTOR	IDL CODE 6.8.1
PO/NO. 23-CQ-9101	SUPPLIERS DRAWING NO. A20751
P.O. NO. 418-040604GF	CONTRACT NO. CO6416
	BUFP. REV 0

**GENERAL ARRANGEMENT
DRAWING OF SECOND
STAGE SEPARATOR EJECTOR**

REGISTRATION CODES: AREA T, 23, XD
DRAWING NO.: FACILITY CODE, DRG. NO., DESP. NO., SEQ. NO., SHEET
PH 25938 R 4160007 001

SCALE: NTS
REF: A

REV	DESCRIPTION	BY	DATE	CHKD	DATE		
0	ISSUED FOR APPROVAL		DM 28/07/07				
RE-ISSUE	DESCRIPTION	No.	ORDER No.	BY	DATE	CHKD	DATE

NOZZLE SCHEDULE						
NOZZLE	DESCRIPTION	NB	RATING	SCHEDULE	FACE FINISH	REMARKS
N1	MOTIVE (MPI) INLET	2"	ASME B16.5 RTJ W/ N8006	SCH 40	1.6 µm Ra	SPECIAL
N2	SECTION (LPI) INLET	4"	NORSOK L-005 REV.2 CL600 COMPACT	SCH 40	0.8 µm Ra	SPD TYPE
N3	DISCHARGE (MPI) OUTLET	6"	NORSOK L-005 REV.2 CL600 COMPACT	SCH 40	0.8 µm Ra	SPD TYPE

MECHANICAL DESIGN CONDITIONS	
MECHANICAL DESIGN CODE	ASME B01.3 & PED CAT II MODULE H
MECHANICAL DESIGN PRESSURE	70.0 BAR G
MECHANICAL DESIGN TEMPERATURE	135°C
CORROSION ALLOWANCE (INTERNAL)	ZERO
MAXIMUM ALLOWABLE WORKING PRESSURE	70.0 BAR G

CONSTRUCTION & TEST	
HYDROSTATIC TEST PRESSURE	107.73 BAR G
NOT RADIOGRAPHY	100%
UTRAL	100%
DP	100%
STRESS RELIEF	NO
INTERNAL VOLUME	0.042m ³
WEIGHTS	DRY: 159.4 kg
	TEST WEIGHT: 200.7 kg

GENERAL NOTES

- ALL INSPECTION & TESTING TO BE IN ACCORDANCE WITH TRANSVAC QUALITY PLAN
- VERIFIED TRUE COPIES OF MATERIAL CERTIFICATES TO BS EN 10204 3.1 REQUIRED FOR ALL PRESSURE RETAINING PARTS
- ALL UNMATED JOINTS TO BE BLANKED WITH WOODEN BLANKS & BOLTED IN POSITION
- REMOVE ALL SHARP CORNERS, BURRS, FLAKES & WELD SPATTER
- MACHINED SURFACES UNLESS OTHERWISE STATED
- HYDROSTATIC TEST TO BE TO PROCEDURE HTP12138
- INTERNAL SURFACES TO BE THOROUGHLY CLEAN, DRY & FREE FROM LOOSE SCALE, GRASS & RUST
- EXTERNAL SURFACES TO BE PAINTED TO SPEC. CP12138
- WELD IN ACCORDANCE WITH WPS 0138 WELDER TO COMPLETE ROOT & FILL INFORMATION ON WELDING & NDT RECORD SHEET JCS12138
- MATERIAL GRADES TO BE IN ACCORDANCE WITH PIPING MATERIAL SPECIFICATION PG-WO-L0001
- MATERIALS TO COMPLY WITH:
 - (A) THE MDS NUMBERS OF NORSOK M-483 (MDS D41, D43, D44, D45)
 - (B) DOCUMENT "WELDING W/ O 01-0024" ADDENDUM TO NORSOK M-430 (CI) 00 15158 (PREVIOUSLY NACE MR0105)
- MATERIAL SUPPLIERS TO BE QUALIFIED TO NORSOK M-483 REV.2
- EXTERNAL SURFACES TO BE IN ACCORDANCE WITH SPN-M-501, SYSTEM 6A - COLOUR RAL8002 "WHITE"
- FASTENERS & NUTS GALVANIZED TO ASTM A155
- 15 PH OF ALL COMPONENTS TO APPLIED INSPECTION PROCEDURE AP96
- WELD HARDNESS CHECKS TO APPLIED INSPECTION PROCEDURE AI/NTS

NAMEPLATE STAMPING

SECOND STAGE SEPARATOR EJECTOR

MANUFACTURER: TRANSVAC SYSTEMS LTD
DESIGN CODE: ASME B31.3 + PED 07/2013

DATE OF MANUFACTURE: 27/07/07
PRESSURE ENVELOPE: SHELL, ORDER No. 12138-16680

MECH DESIGN PRESS (BAR G): 70
MECH DESIGN TEMP. (C°): 135
M.A.W.P. (BAR G): 70
TEST PRESSURE (BAR G): 107.73
CORROSION ALLOWANCE (m.m): ZERO
VOLUMES (M³): 0.042 TOTAL

P.W.H.T. NONE RADIOGRAPHY 100%
WEIGHTS FULL (KG) EMPTY (KG)

INSPECTOR STAMP: CALTEC
TEL: +44 (0) 1773 831100
TEL: +44 (0) 1234 758056

ITEM No. 23-CQ-9101
SERIAL No. A20751
PRODUCT GROUP: GAS/2
CATEGORY: II
MODULE: 21

NOTE: FULL AS WEIGHED WEIGHT + 42.0 KG. EMPTY AS WEIGHED WEIGHT

PED CLASS

ASSESSED AS	MEDIUM	FLUID GROUP	GAS	VOL. / NPS	0.42 M ³	MAP	100.1 BAR G
PIPEWORK	Unassessd	ASSESSMENT MODULE	H	PED CATEGORY III			

UNIT DESIGNATION: GJE150DS4FD
HYDROSTATIC TEST PRESSURE: 107.73 BAR G

INSPECTION BY: TRANSVAC Y, CLIENT CC, P334, RSA Y

CONNECTIONS: FLANGED TO ASME 16.5 & NORSOK L-005 CL600 SPD

TRANSVAC / CALTEC REF.: 12138 / 1668

CLIENT: MUSTANG ENGINEERING

DRAWN: D Moss
DATE: 27/07/07

CHECKED: []
VERIFIED: []

GENERAL NOTES:
DO NOT SCALE
REMOVE ALL SHARP CORNERS
PRESERVE MARKED DIMS ± 0.4 & 0.5mm
ALL UNLIMITED DIMENSIONS TO BE TOLERANCED IN ACCORDANCE WITH THE CURRENT ISSUE OF BS EN ISO 2768-1
STANDARD TOLERANCING
MACHINED SURFACES FINISH: 0.8 µm Ra
FLANGES DRILLED TO PIP CENTRES U.S.S.
ACKNOWLEDGEMENT: CALTEC PAPER NO. 01-0024-002 IN THE U.S.A.

TITLE: GENERAL ARRANGEMENT OF SECOND STAGE SEPARATOR EJECTOR
PLANT ITEM NO. 23-CQ-9101

SIZE: DWG NO. A1, A20751, REV 0
FILE NAME: A20751.dft
SCALE: NTS, WEIGHT: 159.4 kg